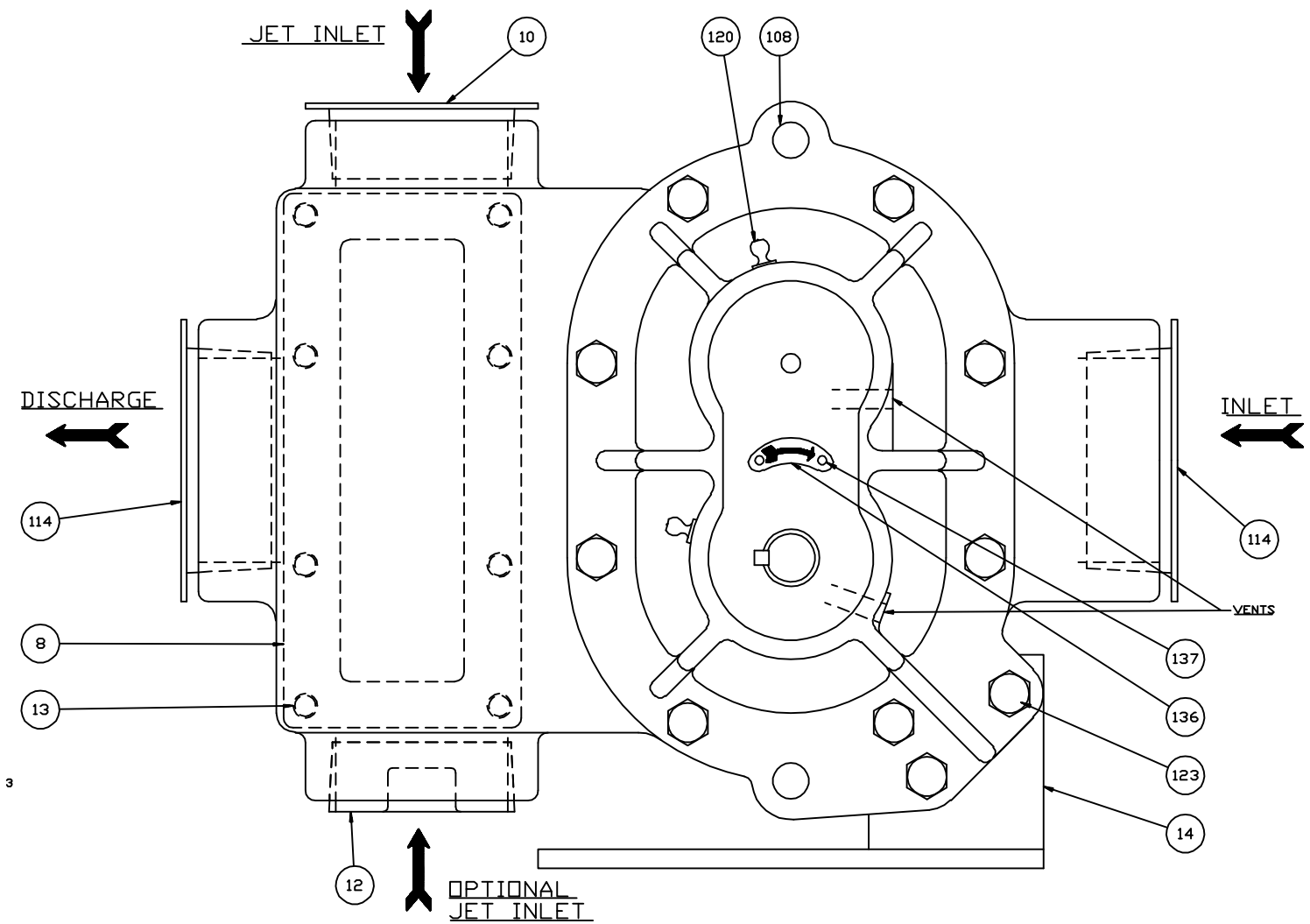
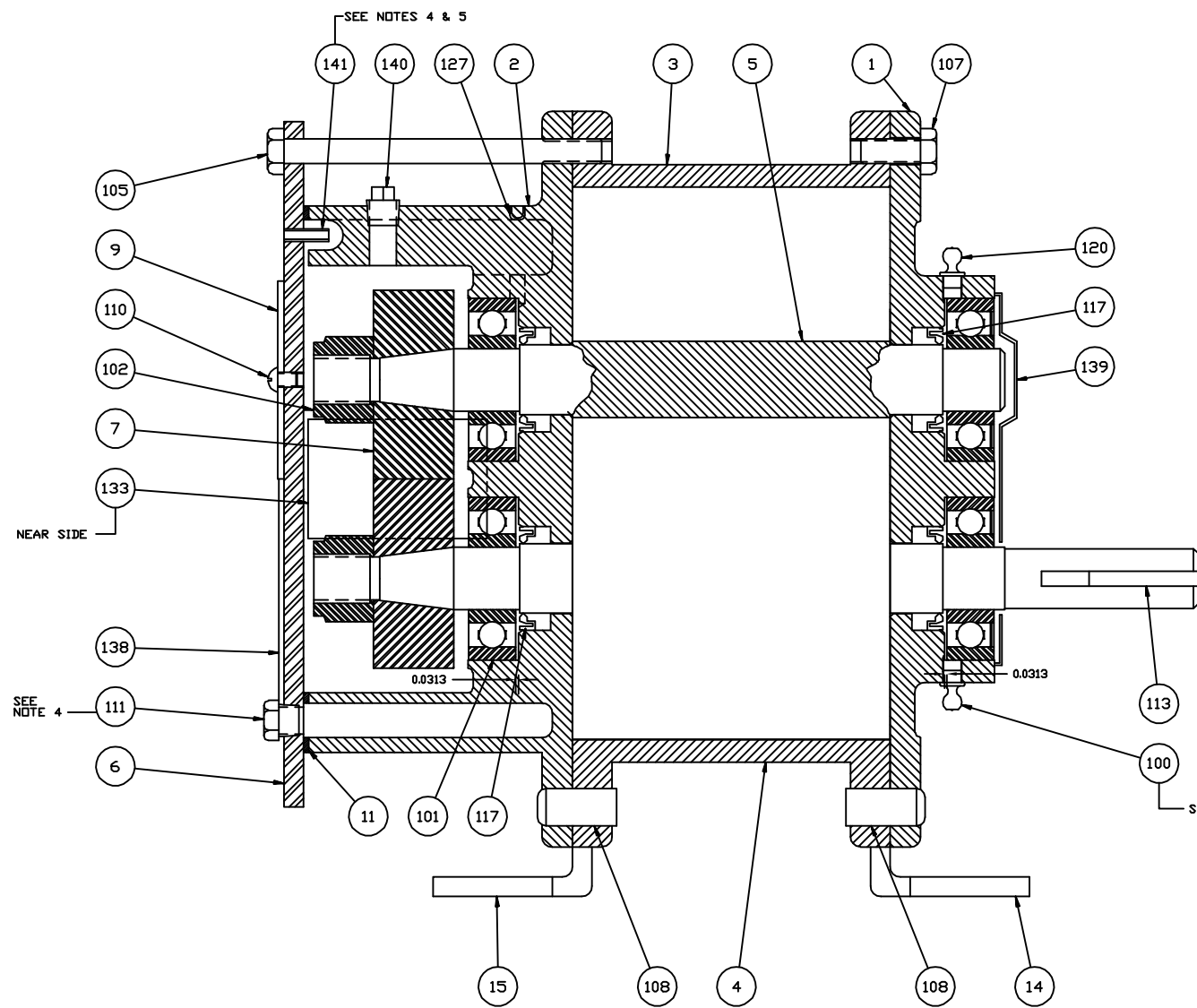


No. REQ'D	PART NAME	PART No. PART No.	MAT'L



- NOTES:
- 1.) INNER RACE OF BEARING TO HAVE MAX. FACE RUNDOUT OF .002 T.I.R.
 - 2.) USE LOCTITE 272 OR 270 ON NAME PLATE SCREW THREAD.
 - 3.) ASSEMBLE BEARING (100) WITH SEAL SHOWING OUTBOARD.
 - 4.) USE PERMATAX #2 ON THREADS (ITEM 11) & AROUND BREATHER (ITEM 14).
 - 5.) INSTALL BREATHER (ITEM 14) FLUSH WITH OUTSIDE OF GEAR COVER (ITEM 6)

NO.	DATE	BY	DATE	CHANGE NOTICE	CHKD.	APP.
CONFIDENTIAL						
THIS DOCUMENT CONTAINS CONFIDENTIAL INFORMATION OF ROOTS DIVISION, DRESSER INDUSTRIES, INC. IT SHALL BE HELD IN STRICTEST CONFIDENCE, AND BE USED ONLY IN CONJUNCTION WITH ROOTS DIVISION BUSINESS.						
REF: EP938	CONCENTRICITY					
FLATNESS	PERPENDICULARITY					
ANGULARITY	PROFILE OF LINE					
PARALLELISM	TRUE POSITION					
STRAIGHTNESS	DIAMETER					
	FINISH IN MICRO INCHES					
C	LOCTITE 272 WAS JOHN CRANE PLASTIC LEAD	RK	05-01-92	T94	RK	AGP
B	REDRAWN	DLM	7-31-93			
A	REVISED PER ECN	RVE	B-4-89	3484V	FLR	AGP
						XASR
						60708A23

DO NOT SCALE FOR DIMENSIONS
ALL DIMENSIONS SHOWN IN BRACKETS () ARE MILLIMETERS

SECTIONAL ASSEMBLY

FOR SIZE 2500 DVJ WHISP AIR MAX BLOWER

DRESSER ROOTS

ROOTS DIVISION
DRESSER EQUIPMENT GROUP
2135 HWY 6 SOUTH
HOUSTON, TX 77077

REV C

2500-J/DVJ/DVJ C-FLANGE WHISPAIR Max Blower Parts List

Item No.	Part Name	Qty.
1	HDPL DE 2500 WHISPAIR COATED	1
1	HDPL DR 2500C FLANGE COATED (DVJ C-Flange)	1
2	HDPL GE 2500 WHISPAIR COATED	1
6	GEAR, CVR 2500 UNITS	1
7	GEAR, ASSY 2500 W/M	1
8	JET MANIFOLD 2-1/2" DVJ	1
10	PLG, SHIP 2" NPT	1
11	GASKET GEAR CVR 2-1/2" W/M	1
12	PLUG, PIPE-CSUNK 2" (IRON)	1
13	SCR, CAP SOCH 10-24 x .50 (DVJ)	8
13	SCR, CAP SOCH 10-24 x .63 (DVJ CPLG C-FLANGE)	8
14	FOOT, R/H 2-1/2" UNIT	1
15	FOOT, L/H 2-1/2" UNIT	1
100	BRG, BALL FAG #6304RSR	2
101	BRG, BALL FAG #6304	2
102	NUT, HEX ESNA 5/8-18	2
105	SCR, CAP HEXH 5/16-18 x 4.0	8
107	SCR, CAP HEXH 5/16-18 x .75	8
108	PIN, DOWEL 1/2 x 1.00	4
110	SCR, SELF-TPNG RNDH 8-32 x .25	1
111	PLUG, PIPE-HH 1/8" DRYSEAL	3
113	KEY, SQ 3/16" x 3/16" x 1-3/8	1
114	PLG, SHIP 2-1/2 NPT	2
117	SEAL, LIP (MITON) 7/8" SFT	4
120	FTG, GREASE 1/4-28" TAPER	2
123	SCR, CAP HEXH 5/16-18 x .75	12
127	PLUG EYELET .208 DIA	1
133	LABEL LUBE W/M UNITS	1
136	ARROW ROT CURVED 1.094 LG	1
137	SCR, DRV RNDH #4 x .31	2
138	LABEL 1/2" x 2-3/8"	1
139	BRGM CVR-DE 2-1/2" (NOT DVJ -C-FLANGE)	1
140	PLG, PIPE 1/8 STL	1
141	AIR, FLTR 5/32" x .025 x .562	1

Specified Lubricants

ROOTS Synthetic Oil: ISO-VG-320 Grade	
	Part Number
Quart	13106004
Gallon	13106005
Case (12 qts.)	13106007

ROOTS Synthetic Oil: ISO-VG-220 Grade	
	Part Number
Quart	13106001
Gallon	13106002
Case (12 qts.)	13106008

ROOTS Synthetic Oil: ISO-VG-150 Grade	
	Part Number
Quart	13106020
Gallon	13106021
Case (12 qts.)	13106023
5 Gallon Pail	13106022
50 Gallon Drum	13106025

ROOTS Synthetic Oil: ISO-VG-100 Grade	
	Part Number
Quart	13106011
Gallon	13106012
Case (12 qts.)	13106014
5 Gallon Pail	13106013
50 Gallon Drum	13106016