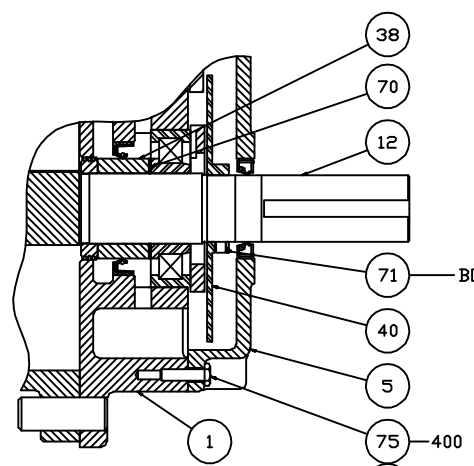


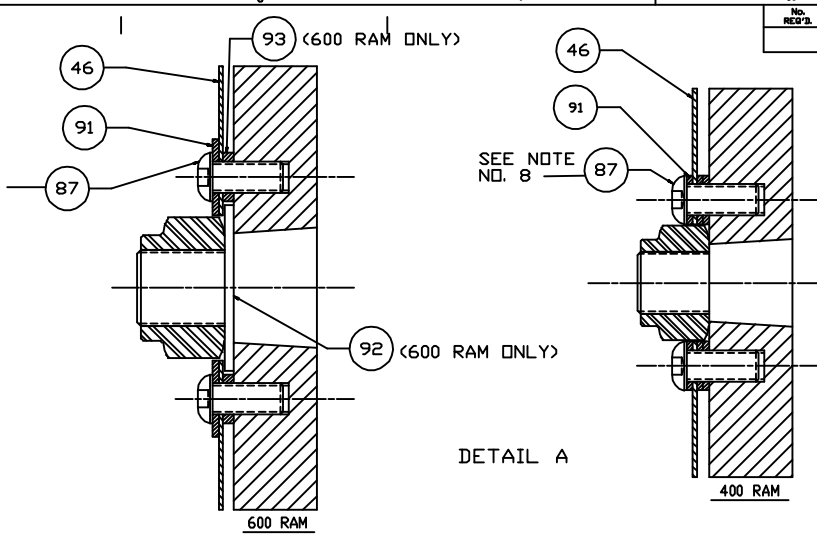
NOTES:

1. DRIVE END COVER TO BE PINNED TO HEADPLATE AFTER ALIGNING SEAL BORE WITH SHAFT WITHIN .001
 2. USE TEFLON SEALANT ON ALL PIPE THREADS & CYLINDER TO HEADPLATE FLANGE FOR WHISPAIR GAS PUMP UNITS ONLY.
 3. ITEMS 34 & 54 MUST BE INSTALLED WITH OIL GROOVE AT TOP.
 4. TORQUE TO 400 FT.LBS.-400
TORQUE TO 630 FT.LBS.-600
 5. TORQUE TO 75 FT.LBS.-400
TORQUE TO 140 FT.LBS.-600
- APPLY LOCKTITE TO SCREW THREADS & BOTH FACES OF WASHER & SLINGER.
6. TORQUE TO 35 FT.LBS. (HEADPLATE)
 7. TORQUE TO 10 FT.LBS. (GEARBOX/END COVER)
 8. LOCKTIGHT AND TORQUE TO FT.LBS-85

BOTTOM DRIVE OPTION

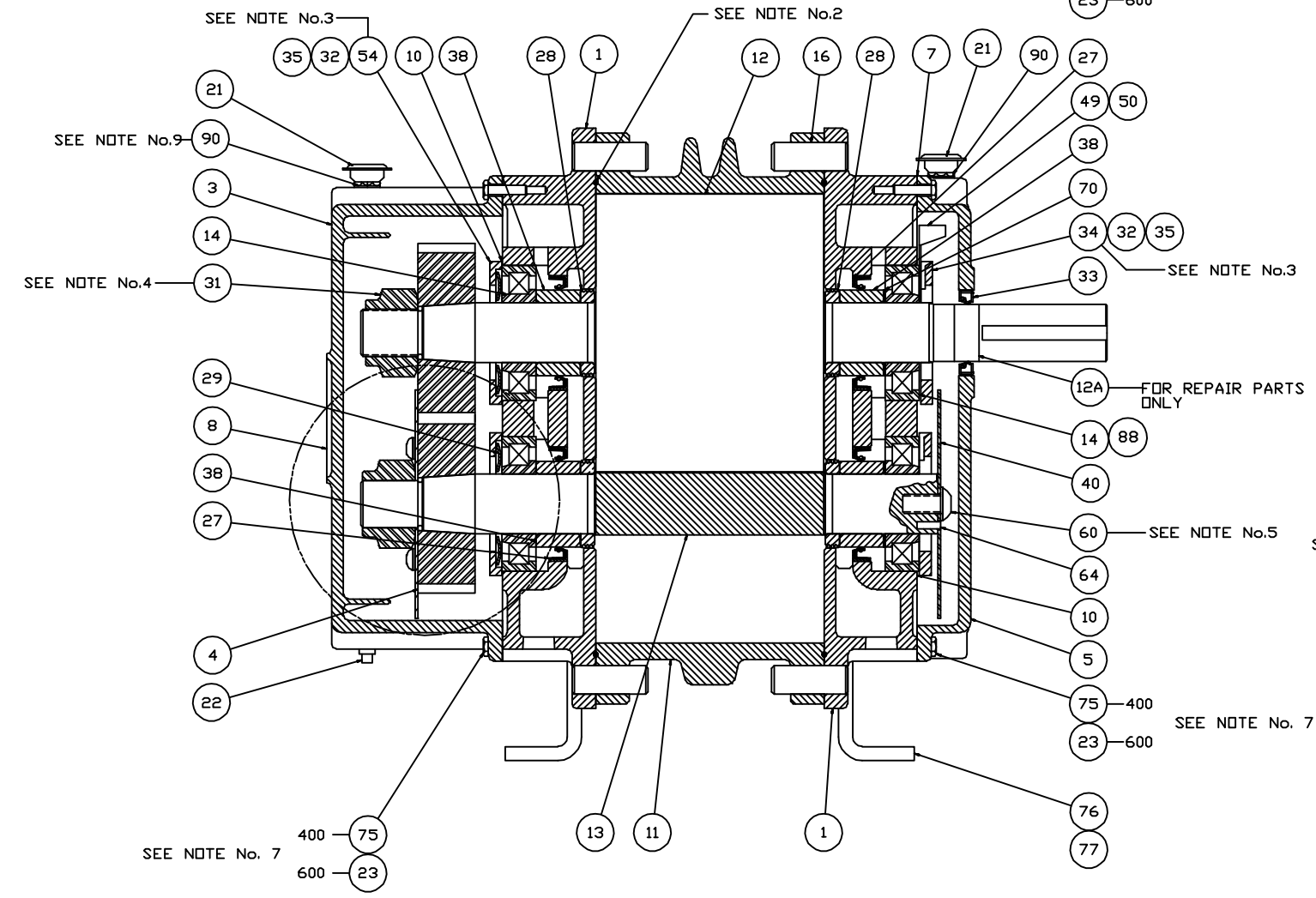


SEE NOTE No. 8

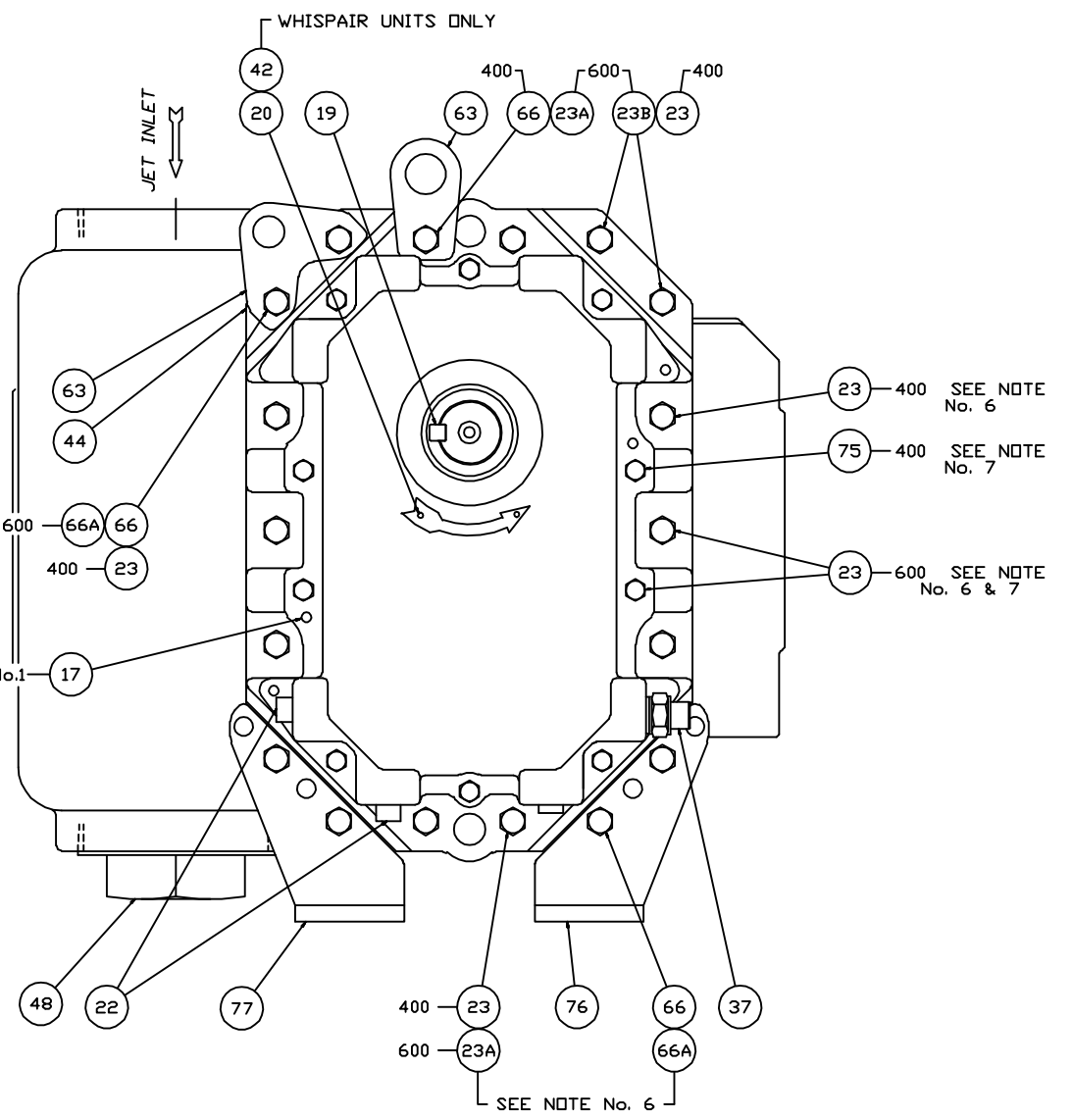


DETAIL A

No. REQ'D	PART NAME	PART No. PART No.	MAT'L.



SEE NOTE No. 1



SEE NOTE No. 6

MFG. REF.		DATE		DO NOT SCALE FOR DIMENSIONS		ORDER No.	
CONFIDENTIAL		DR. RDR 12/7/98		ALL DIMENSIONS SHOWN IN BRACKETS () ARE MILLIMETERS		SECTIONAL ASSEMBLY	
THIS DOCUMENT CONTAINS CONFIDENTIAL INFORMATION OF ROOTS DIVISION, DRESSER INDUSTRIES, INC. IT SHALL BE HELD IN STRICTEST CONFIDENCE, AND BE USED ONLY IN CONJUNCTION WITH ROOTS DIVISION BUSINESS.		CHKD. BMS 1/7/99		400/600 RAM (BRONZE IMPELLERS)		ROOTS DIVISION	
REF: EP938		APP. AGP 1/7/99		DRESSER		DRESSER EQUIPMENT GROUP	
□ FLATNESS		3BV RDR 12/7/98		FRACOM - 11/94		2135 HWY 6 SOUTH	
∠ PERPENDICULARITY		SCALE 6"=1'-0"		TOLERANCES UNLESS OTHERWISE SPECIFIED		HOUSTON, TX. IN USA	
∩ PROFILE OF LINE		C ADDED ITEMS 91,92,93 & DETAIL A		FINISHED DIMENSIONS		85545023	
∩ PROFILE OF A SURFACE		A ADDED ITEM #88		TYP PLACE DECIMALS 0.00-1.00		REV C	
∥ PARALLELISM		B REVISED TO BE AIR UNITS		FRACTIONAL - 1/64			
⊕ TRUE POSITION		RDR 6/24/99 6474V BMS NEP		THREE PLACE DECIMALS 0.000-1.000			
↔ STRAIGHTNESS		REVISIONS					
		BY DATE CHANGE NOTICE					
		CHKD. APP					

**RAM, RAM-J Series Parts List -4" and 6"
Gear Diameter** (Refer to drawing #81881023)

Item #	Part Name	Qty.
1	Headplate	2
3	Gearbox	1
4	Timing Gears	2
5	End Cover	1
7	Gasket – Gearbox/Cover	2
10	Shims	Lot
11	Cylinder	1
12	Impeller & Shaft Drive	1
13	Impeller & Shaft Driven	1
14	Bearing Roller	4
16	Pin, Dowel (Pull Out)	4
17	Pin, Dowel	2
19	Key Square	1
21	Breather	2
22	Plug, Pipe	12
23	Screw, Cap Hex Hd.	**
27	Seal, lip headplate	4
28	Piston, Ring-Seal	4
29	Washer, Wavy Spring	2
31	Gear Nut	2
32	Scr, Cap Hex Hd.	16
33	Seal, Lip Drive	1
34	Brg. Clamp Plate - D. E.	2
35	Lock Washer - Spring	16
37	Sight Plug - Oil Level	2
38	Sleeve, Shaft	4
40	Slinger - D.E. (Top Drive)	1
46	Slinger - G.E.	1
49	Oil Leader L/S	1
50	Oil, Leader-R/S	1
54	Brg Clamp Plate - G. E.	2
60	Screw, Cap Butt. HD.	1
64	Pin, Spring	1
66	Screw, Cap Hex HD.	**
66.1	WHISPAIR, Spring Lock 3/8M	**
70	Shims D.E. Brg.	1
75	Screw, Cap - Hex HD.	**
76	Blower Foot - RH	2
77	Blower Foot - LH	2
85	Elb, Pipe-Black	2
85.1	Plug, Pipe	2
87	Scr, Cap BH	2
88	Anti Rotation Ball	4
90	BSHG-RDCG	2
91	Washer, Plain Flat	2
92	Washer, Plain Flat	2
93	Washer	2
94	Oil Leader	2
95	Cap Screw	4

** Quantity varies by blower

**RAM series parts list 4" & 6" gear diameter for
Gas, DVJ, DPJ & JV**

(Refer to drawing #81881023)

Item Number	Part Name	Quantity
1	Headplate	2
2	Spray nozzle assembly	1
3	Gearbox	1
4	Timing Gears	2
5	End Cover	1
7	Gasket – Gearbox/Cover	2
10	Shims	Lot
11	Cylinder	1
12	Impeller & Shaft Drive	1
13	Impeller & Shaft Driven	1
14	Bearing Roller	4
16	Pin, Dowel (Pull Out)	4
17	Pin, Dowel	2
19	Key Square	1
21	Plug - Vent	2
22	Plug, Pipe	12
23	Screw, Cap Hex Hd.	**
27	Seal, Lip Headplate DVJ, DPJ, JV	4
27	Seal-Mech-Viton Gas	4
28	Piston, Ring-Seal	4
29	Washer, Wavy Spring	2
31	Gear Nut	2
32	Scr, Cap Hex Hd.	16
33	Seal, Lip Drive	1
34	Brg. Clamp Plate - D. E.	2
35	Lock Washer - Spring	16
37	Oil Level Gauge	2
38	Sleeve, Shaft DVJ, DPJ, JV	4
38	Sleeve - Gas	4
40	Slinger - D.E. (Top Drive)	1
46	Slinger - G.E.	1
49	Oil Leader L/S	1
50	Oil, Leader-R/S	1
54	Brg Clamp Plate - G. E.	2
60	Screw, Cap Butt. HD.	1
64	Pin, Spring	1
66	Screw, Cap Hex HD.	**
66.1	Whispair, Spring Lock 3/8M	**
70	Shims D.E. Brg.	1
75	Screw, Cap - Hex HD.	**
76	Blower Foot - RH	2
77	Blower Foot - LH	2
85	Elb, Pipe-Black	2
85.1	Plug, Pipe	2
87	Scr, Cap BH	2
88	Anti Rotation Ball	4
90	BSHG-RDCG	2
91	Washer, Plain Flat	2
92	Washer, Plain Flat	2
93	Washer	2
94	Oil Leader	2
95	Cap Screw	4

**Quantities vary by blower.