

NOTES: A- INSTALL ITEM #20 (SCREWS) IN ASSEMBLY

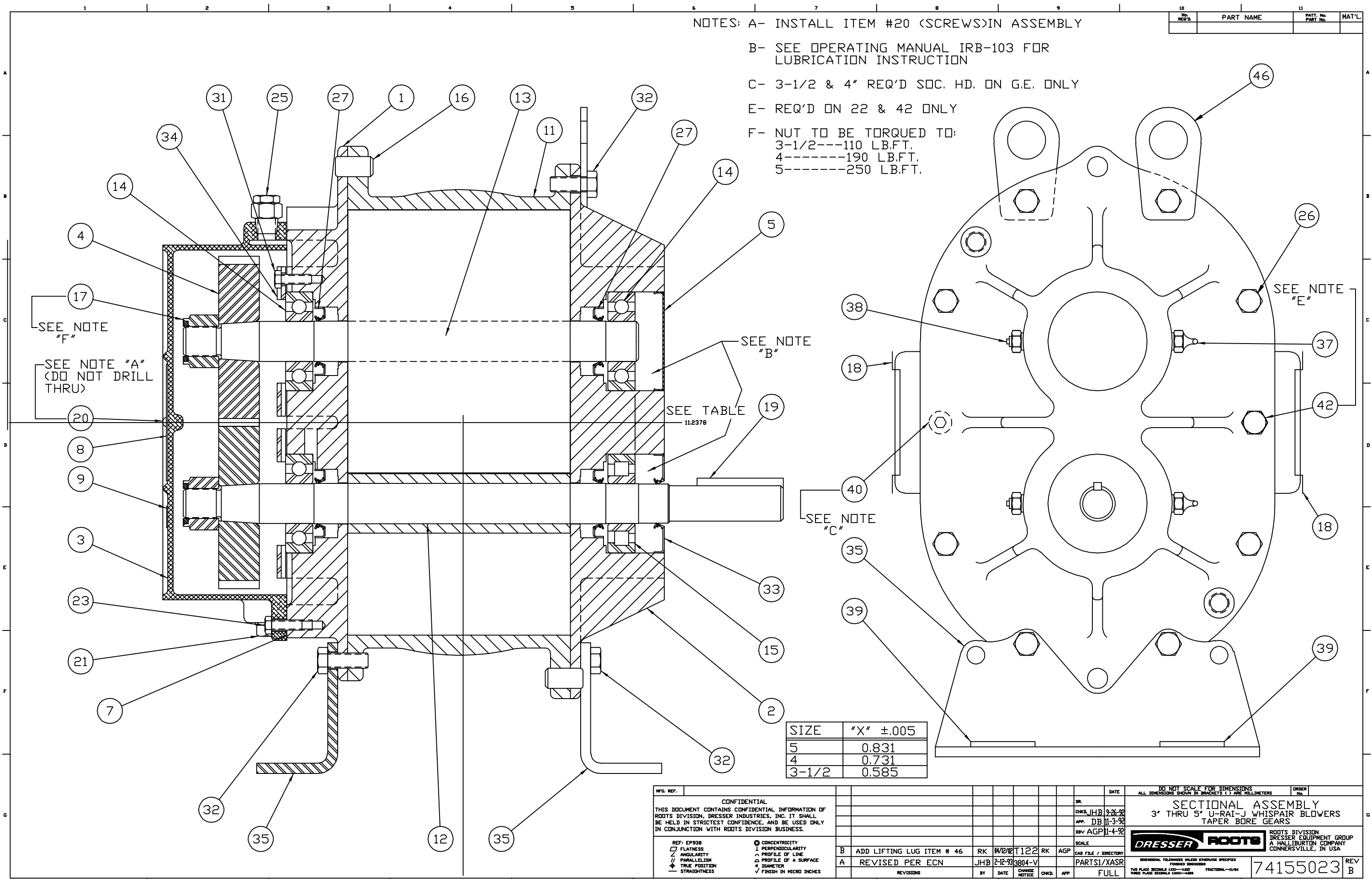
B- SEE OPERATING MANUAL IRB-103 FOR LUBRICATION INSTRUCTION

C- 3-1/2 & 4" REQ'D SOC. HD. ON G.E. ONLY

E- REQ'D ON 22 & 42 ONLY

F- NUT TO BE TORQUED TO:
 3-1/2---110 LB.FT.
 4-----190 LB.FT.
 5-----250 LB.FT.

No. REQ'D	PART NAME	PART No. PART No.	MAT'L.



SIZE	"X" ±.005
5	0.831
4	0.731
3-1/2	0.585

CONFIDENTIAL
 THIS DOCUMENT CONTAINS CONFIDENTIAL INFORMATION OF ROOTS DIVISION, DRESSER INDUSTRIES, INC. IT SHALL BE HELD IN STRICTEST CONFIDENCE, AND BE USED ONLY IN CONJUNCTION WITH ROOTS DIVISION BUSINESS.

REF: EP938
 □ FLATNESS
 ∠ ANGULARITY
 ∥ PARALLELISM
 ⊕ TRUE POSITION
 ⊖ STRAIGHTNESS

◎ CONCENTRICITY
 ⊥ PERPENDICULARITY
 ~ PROFILE OF LINE
 △ PROFILE OF A SURFACE
 ∅ DIAMETER
 √ FINISH IN MICRO INCHES

NO.	DATE	BY	CHKD.	APP.	REVISIONS
B	11/2/92	T122	RK	AGP	ADD LIFTING LUG ITEM # 46
A	2-12-93	3804-V	JHB	AGP	REVISED PER ECN

DATE: 11-3-92
 DR: JHB
 APP: DB
 DRV: AGP

SCALE: CAD FILE / DIRECTORY

PARTS1/XASR

DO NOT SCALE FOR DIMENSIONS
 ALL DIMENSIONS SHOWN IN BRACKETS () ARE MILLIMETERS

SECTIONAL ASSEMBLY
 3' THRU 5' U-RAT-J WHISPAIR BLOWERS
 TAPER BORE GEARS

ROOTS DIVISION
 DRESSER EQUIPMENT GROUP
 A HALLIBURTON COMPANY
 CONNERSVILLE, IN USA

74155023 REV B



URAI PARTS LIST

2-1/2" thru 5" URAI/URAI-J

ITEM NO.	PART NAME	ITEM NO.	PART NAME
1	Headplate, Gear End	20	Screw, Self-Tapping
2	Headplate, Drive End	21	Pipe Plug
3	Gearbox	23	Screw, Hex Head
4	Gear Assembly	25	Vent Plug
5	Plug, Cover – Blind End	26	Screw, Hex Head
7	Gasket – Gear End	27	Lip Seal, Inboard
8	Nameplate, Serial #	31	Screw, Hex Head
9	Nameplate, Lube	32	Screw, Hex Head
11	Cylinder	33	Lip Seal, Drive Shaft
12	Impeller & Shaft - Drive	34	Bearing Clamp Plate
13	Impeller & Shaft - Driven	35	Blower Foot
14	Bearing Ball – Gear End	37	Grease Fitting
15	Bearing Roller – Drive End	38	Vent Plug
16	Dowel Pin	39	Washer
17	Gear Nut	40	Screw, Socket Head
18	Plug - Port	42	Screw, Hex Head
19	Key	46	Lifting Lug